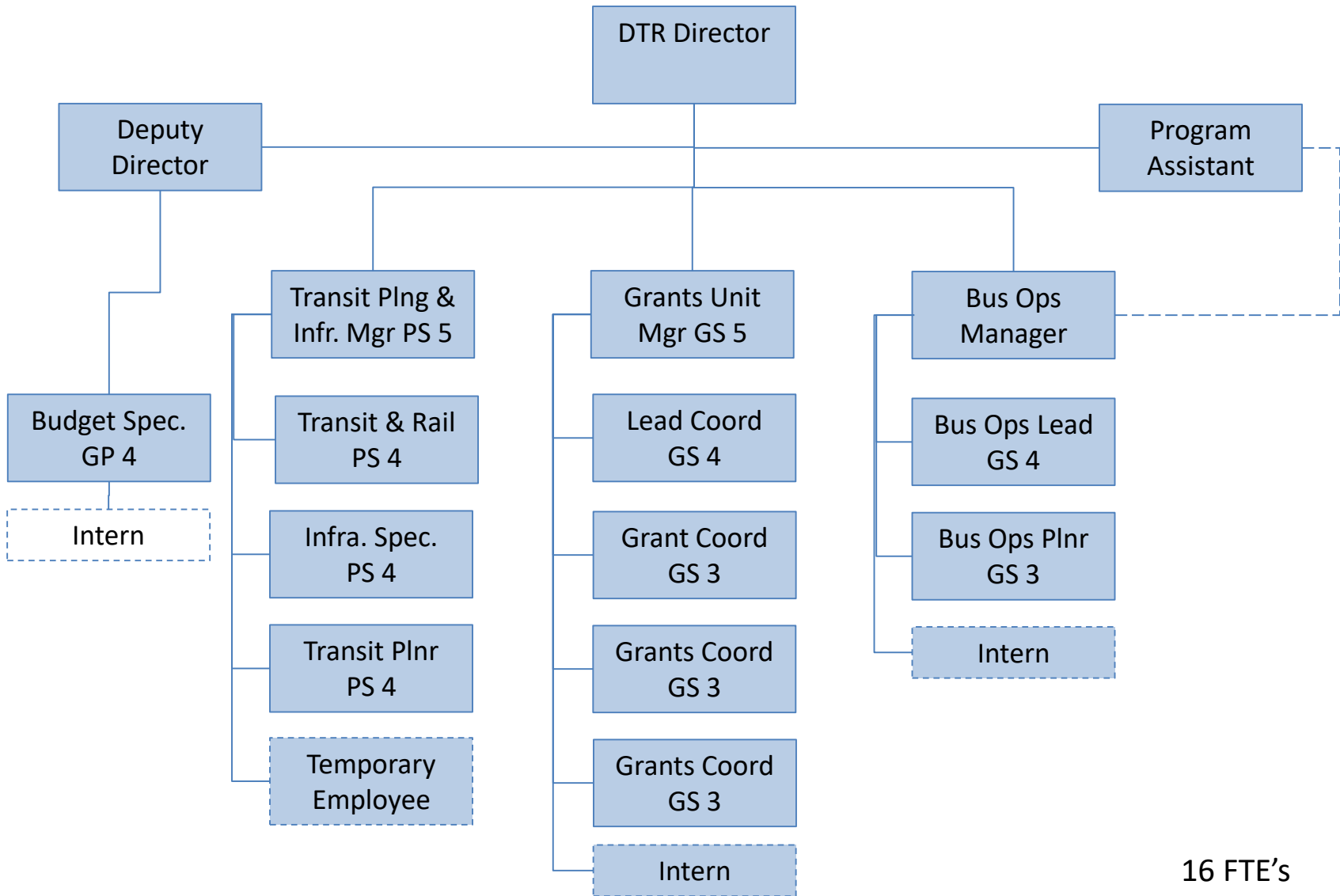


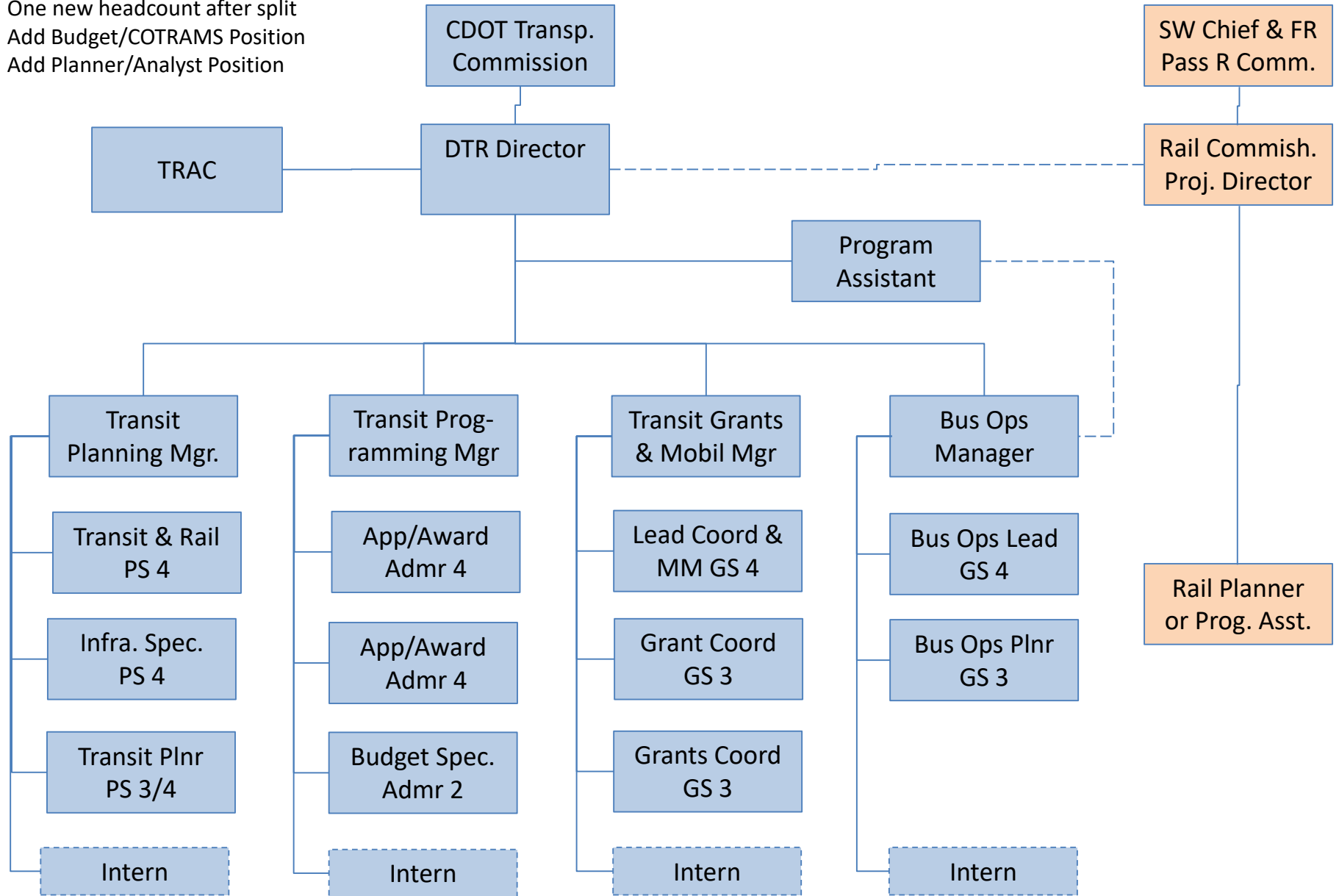
# 2018 – Structure as of 1/2/2018



16 FTE's  
4 interns/temps  
20 total

Notes:  
 Eliminate Deputy Director & split  
 One new headcount after split  
 Add Budget/COTRAMS Position  
 Add Planner/Analyst Position

## 2018 – Four Unit Structure w/ SWC & FRPRC



# Workflow: Plan, Select, Budget & Contract, Deliver & Measure

